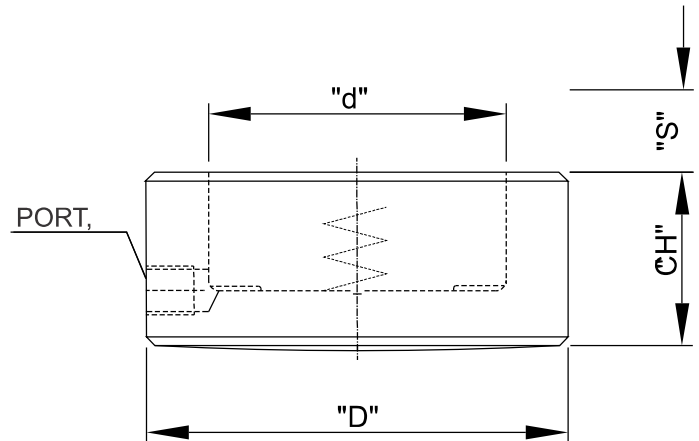
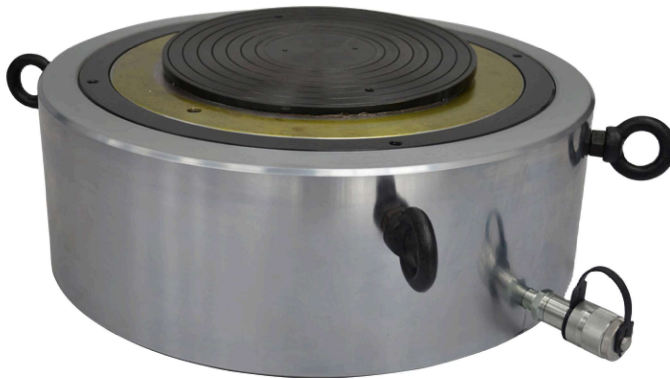


Hydraulic span jack, Single acting, Plain ram spring return/load return



## Features:

- Spherical saddle for better distribution of load to be lifted
- Threaded ram with locknut for safe load holding for longer duration
- Lifting application requiring sustained load holding in infrastructure projects & heavy fabrication
- Ideally suited where space is limited
- Equipment to be operated by a trained personnel.
- Customized solutions on request.
- Max. Working pressure @ 700 bar

Model	Capacity	Stroke	Close Height	Cylinder OD (D)	Cylinder ID (d)	Ram OD	Weight (Approx)
	ton	mm	mm	mm	mm	mm	kg
MSPS	50	50	125	140	100	100	15
MSPS	100	50	140	180	140	140	28.5
MSPS	150	45	150	220	170	170	44
MSPS	200	45	155	255	200	200	61
MSPS	250	45	160	280	220	220	76
MSPS	300	45	170	310	240	240	99
MSPS	400	45	180	350	270	270	130
MSPS	500	45	195	400	300	300	185
MSPS	800	45	245	505	380	380	369
MSPS	1000	45	260	560	425	425	477
MSPS	1200	45	280	600	475	475	597