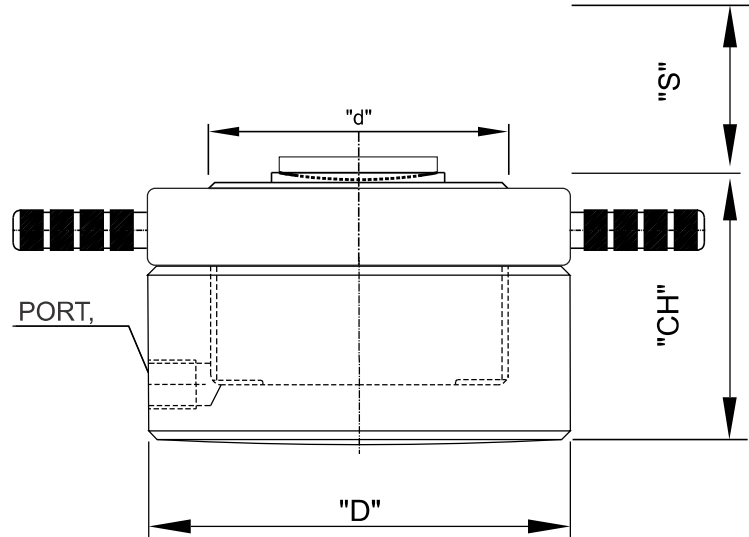


# MSTS



**MAC**  
**HYDRAULIC SYSTEMS**

Hydraulic span jack, Single acting, Threaded ram, spring return/load return



## Features:

- Ideally suited in low clearance & constricted spaces
- Suitable for precision lifting, alignment of machinery. Heavy structures & girders
- Spherical saddle for better distribution of load to be lifted
- Ideally suited where space is limited
- Equipment to be operated by a trained personnel.
- Customized solutions on request.
- Max. Working pressure @ 700 bar

Model	Capacity	Stroke	Close Height	Cylinder OD (D)	Cylinder ID (d)	Ram OD	Weight (Approx)
	ton	mm	mm	mm	mm	mm	kg
MSTS	250	45	140	280	220	220	65
MSTS	400	45	160	350	270	270	112
MSTS	500	45	170	400	300	300	158
MSTS	800	45	190	505	380	380	275
MSTS	1000	45	220	560	425	425	392